



THE PROPAGATION HOUSE

The Propagation House is a fully residential recording and rehearsal facility set in stunning rural countryside on the Devon/Cornwall border. The studio itself was designed and constructed by "The Studio People" on the foundations of an old propagation house.

These surroundings combined with our state of the art equipment provide a productive and creative yet relaxing and comfortable environment to work in.

We tailor our services to our clients needs and specifications, and are always open to new suggestions.

CONTROL ROOM (see above)

Our main Control Room was designed and built from the ground up by The Studio People. It is fitted with a full air conditioning system, skylight, flush monitor wall, bass traps, and a large triple glazed window to Live Room One .

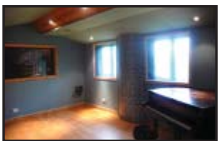
All this provides a clean and healthy environment which helps to minimize fatigue and ensures an efficient recording session.

We are proud to say that we have the best computer based recording available in the form of ProTools HD3 and Emagic Logic Audio Platinum running on a Quad processor Apple MacPro computer.

There are 4 main recording rooms available, plus an isolated booth.

Whether catering for one artist looking for the perfect room / acoustics for a performance or a full ten piece band wanting to record live together, we have the facilities to meet your needs.

Some artists have also taken advantage of our peaceful location and recorded outside, with great results.



LIVE ROOM 1

This is our main recording room. 500 sq ft with a floating wooden floor, bass traps, natural

light, air conditioning and large window to Control Room

This room has a great sound for most acoustic instruments.

This room is available to our residential customers 24 hours a day.

LIVE ROOM 2



750 sq ft Edwardian glasshouse which has been modified acoustically to give a pleasing ambience. If you need a big room sound then this is it. It also functions as a space to relax in, and an invaluable extra environment for listening to your mix.

DEAD ROOM

The walls and ceiling are packed with 3 ft of rock-wool which leaves this room devoid



of any reverb, ambience and interference. Room size 10ft X 9ft.



PROJECT STUDIO

(fully networked to the main Control Room), With natural light, air conditioning and windows to the Dead Room and the

Small Room.

This room can be used as an Amp booth or as a pre-production "project" area, and is useful when mixing or mastering in the main control room to listen to your track in another environment.

There are 2 Apple Macs with most of today's music software and a good selection of games to keep you occupied.

Programmers / Producers can install their own equipment and prepare their ideas before finishing then in the main Control Room,

THE SMALL ROOM

This room is only 4ft x 9ft, but it has been acoustically treated and is useful as an amp booth.

THE LODGE



The Lodge is comprised of:
3 Twin Bedrooms.

1 Double en suite Bedroom.

Two full bathrooms.

Recently refurbished to a high quality standard and provides visitors with superior comfort in beautiful surroundings for a memorable stay.

Large, open-plan sitting room/dining room with French windows onto private terrace. Well-fitted kitchen area (including freezer, dishwasher and washing machine).

The Propagation House Studios

East Lodge, Ogbeare,

North Tamerton,

Holsworthy,

Devon,

England EX22 6SE.

info@propagationhouse.com

+44 (0)1409 271111